

LOGiT Series

Data Loggers

Premier Data Loggers; designed with the latest technology to accommodate technological advances for years to come. They are economic, compact and easy to use.

Select the right LOGiT Data Logger for your application along with the Windows compatible LOGiT PC Software and Interface Cable (LLS). Then...

Choose a sample rate, make desired connections and LOGiT!

MADE IN THE USA



Features/Benefits

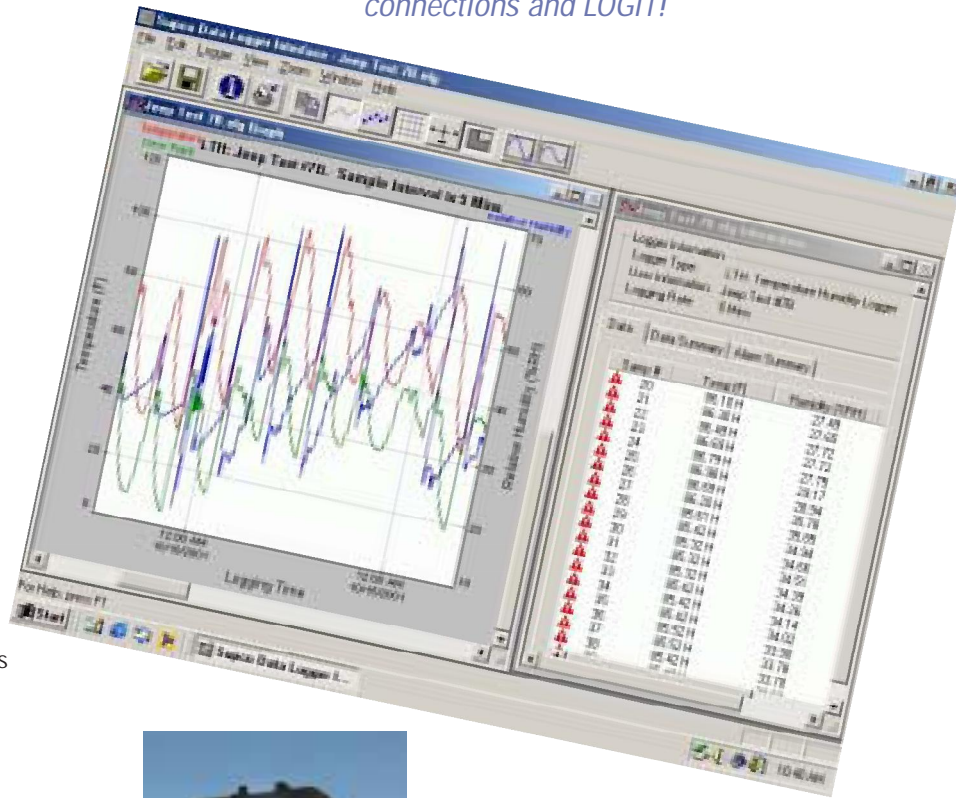
- Store over 10,000 measurement points
- 1 second to 18 hour sample rate; 1 second increments
- Custom user identification (30 characters)
- Real Time data monitoring
- Over/Under Alarm threshold settings
- Visual alarm indication
- User selectable Recording Start (Specified date & time, immediate after setup or on door close)
- Tamper proof
- 20 month battery life (at 1 minute sample rate)
- Data rollover option
- Unique logger ID
- One PC Software operates with all loggers (LLS not included)
- Graphic or text data
- Zoom capability
- USB interface optional (USBS)
- 1 year warranty

Logger Selections*

- LT2** Temperature Logger (internal and external)
- LTC** Thermocouple Temperature Logger
- LTT** Dual Temperature Logger with 2 external temperature probes
- LTH** Temperature and Humidity Logger
- LPT** Pressure and Temperature Logger
- LCV** AC Current and Voltage Logger
- L420** 4 – 20 ma Logger

*Note: Logger needs optional LLS Software package to program data logger and download data for analysis. It is not included with any LOGiT data logger.

*Note: The SUPCO LOGiT and DL Series Loggers are NOT compatible.



LLS LOGiT PC Software and Interface*

- PC Software on CD ROM
- LINT Interface
- Cable for LOGiTs to Serial Port (CABLE6)

Benefits/Specifications

- Compatible with Windows 95 and above
- Graphic and Text Data
- 3 Memory modes: Stop on full, record continuously, or memory rollover
- Real time monitoring
- Password protected calibration of each channel
- Data exportable to Text or Excel
- Maximum Serial Interface 50 feet.
- Minimum System Requirements: 8MB RAM, 2MB Disk Space, 800 x 600 Resolution, COM port or USB port (Optional USB Interface required)

Data Loggers



For Temperature and Temperature/Humidity Sensitive Applications:

- Refrigerators/Freezers
- Commercial Refrigeration Systems
- Medical Storage Facilities
- Laboratories
- Greenhouses
- Florists
- Museums

Select the right Logger for your application...

LT2 Temperature Logger (Internal & External)

- One Internal and One External Temperature Measurement, Simultaneously



LTT Dual Temperature Logger

- 2 Independent External Temperature Measurements & Temperature Differential



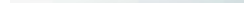
LTC Thermocouple Temperature Logger

- One internal and one external (J, K, E, T, R, S Thermocouples) temperature measurement



LTH Temperature/ Humidity Logger

- Integral Temperature, Humidity and Dew Point Measurements



New!

TAL2 Dual Temperature Alarm Logger

- Set high and low alarms for (2) temperature sensitive applications, and track their temperature trends, simultaneously.
- For complete specifications see listing under Temperature Alarms pages 167-169



New!

For Pressure and Temperature Sensitive Applications:

- Compressor Run Cycles
- Testing New Installations
- Pneumatic air lines
- Tracking Intermittent Problems
- Superheat Measurements

LPT Pressure and Temperature Logger

- External Pressure and Temperature Measurements



For Simultaneous Single Phase Current and Voltage Monitoring:

- Compressor and Fan Run Cycles
- Troubleshooting Intermittent problems
- Verification of Power Conditions
- Use three LCV's for Three Phase Applications

LCV Current and Voltage Logger

- External Current Probe and Voltage Measurements



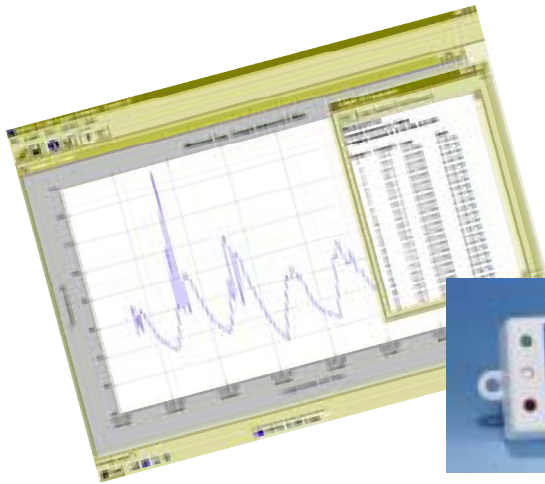
For Monitoring 4 – 20 ma Process control loops in:

- Manufacturing
- Package Handling
- Automated Test Systems

L420 4 – 20 ma Logger

- Connection for 4 – 20 ma loop measurements





SL200C

Easy to use and self-contained, the miniature SL200C data logger is designed to record the temperature of the surrounding environment.

Features/Benefits

- Windows 95, 98, 2000, NT, ME & XP compatible software (included)
- PC or push button recording control
- Temperature alarm with visual indication on demand
- User selectable stop on memory full or memory rollover for continuous recording
- View graph & text simultaneously
- Can calibrate in the field
- Displays temperature in °F or °C
- RS-232 Interface (No Special Cable Required)
- USB Interface optional (USBS)



Data Logger Specifications

	LT2	LTH	LTC	LTT
Sample Point Capacity	21,500 points (Single channel) 10,750 points and differential (Dual channel)	21,500 for temperature only 10,750 points for Temperature, Humidity and Dew Point	10,750 points for external and internal temperature	21,500 temperature points (1 probe) 10,750 temperature points and differential (2 probes)
Sampling Rate	1 second to 18 hours	1 second to 18 hours	1 second to 18 hours	1 second to 18 hours
Alarms	Over and under alarms for each probe.	Over and under alarms for temperature & humidity.	Over and under alarms for each probe	Over and under alarms for each probe.
Temperature Range (Internal Sensor)	32°F to 140°F (0°C to 60°C) w/ Alkaline Battery -40°F to 150°F (-40°C to 65°C) w/ Lithium Battery	32°F to 40°F (0°C to 60°C) w/ Alkaline Battery -40°F to 150°F (-40°C to 65°C) w/ Lithium Battery	32°F to 140°F (0°C to 60°C) w/ Alkaline Battery -40°F to 150°F (-40°C to 65°C) w/ Lithium Battery	
Temperature Range (External Sensor)	-40°F to 150°F (-40°C to 65°C)		Depends on thermocouple (J, K, E, T, R, S)	-50°F to 300°F (-46°C to 150°C)
Accuracy	±1.0°F (0.5°C)	±2°F (1°C)	Depends on thermocouple	±2°F (1°C)
Resolution	0.1°F (0.05°C)	0.1°F (0.05°C)	0.1°F (0.05°C)	0.1°F (0.05°C)
Time Accuracy	±100ppm @75°F	±100ppm @75°F	±100ppm @75°F	±100ppm @75°F
Relative Humidity Range		0% to 99.9% RH, Non-condensing.		0% to 95% RH, non-condensing
Relative Humidity Accuracy		±2% full scale, from 0% to 95% RH for temperatures between 32°F and 140°F (0°C to 60°C)		
Relative Humidity Resolution		0.1% RH		
Pressure Range				
Pressure Accuracy				
Pressure Resolution				
Pressure Connection				
Input Current Range				
Current Accuracy				
Current Resolution				
Voltage Range				
Voltage Accuracy				
Voltage Resolution				
Temperature using Alkaline Battery	32°F to 140°F (0°C to 60°C)	32°F to 140°F (0°C to 60°C)	Operating Range 32°F to 140°F (0°C to 60°C)	32°F to 140°F (0°C to 60°C)
Temperature using Lithium Battery	-40°F to 150°F (-40°C to 65°C)	-40°F to 150°F (-40°C to 65°C)	-40°F to 150°F (-40°C to 65°C)	-40°F to 150°F (-40°C to 65°C)
Operating Range Humidity	0% to 95% RH, Non-condensing	0% to 99.9% RH, Non-condensing		
Storage Temperature	-40°F to 170°F (-40°C to 77°C)	-40°F to 170°F (-40°C to 77°C)	-40°F to 170°F (-40°C to 77°C)	-40°F to 170°F (-40°C to 77°C)
Calibration	Single point offset calibration available through software.	Single point offset calibration available through software. Humidity is factory calibrated.	Single point offset calibration available through software.	Single point offset calibration available through software.
Dimensions	3" x 2.5" x 1.1" (7.6cm x 6.4cm x 2.8cm)	3" x 2.5" x 1.1" (7.6cm x 6.4cm x 2.8cm)	3" x 2.5" x 1.1" (7.6cm x 6.4cm x 2.8cm)	3" x 2.5" x 1.1" (7.6cm x 6.4cm x 2.8cm)
Weight	2.5 Oz (71g)	2.5 Oz (71g)	2.5 Oz (71g)	2.5 Oz (71g)
Power Source	9V Alkaline or Lithium battery (not included)	9V Alkaline or Lithium battery (not included)	9V Alkaline or Lithium battery (not included)	9V Alkaline or Lithium battery (not included)
Battery Life (average use)	18 Months using Alkaline Battery 36 Months using Lithium Battery	20 Months using Alkaline Battery 40 Months using Lithium Battery	20 Months using Alkaline Battery 40 Months using Lithium Battery	20 Months using Alkaline Battery 40 Months using Lithium Battery





HTHL10 Temperature Humidity Logger

With its triple display, the HTHL10 provides instant measurements and trend analysis for temperature and humidity

Features/Benefits

- RS-232 Interface With Windows Software
- 16,000 Records Data Logger
- Auto Power Off
- TIME Function
- HOLD Function
- MIN/MAX Function
- Resolution 0.1°C, 0.1°F
- Dual Input
- Compatible with Windows 95, 98, 2000, NT, and ME.
- Triple Display

LPT	LCV	L420	SL200C	HTHL10
10,750 points for Pressure & Temperature 21,500 points for Pressure OR Temperature	10,750 points for Current & Voltage 21,500 points for Current OR Voltage	21,500 points	2048 Temperature Samples	16,241 records
1 second to 18 hours	1 second to 18 hours	1 second to 18 hours	1 to 255 minutes	
Over and under alarms for Pressure & Temperature	Over and under alarms for current and voltage	Over and under alarm	High and Low Temperature Alarms w/ visual indication on demand -40°F to 185°F (-40°C to 85°C)	
-40°F to 150°F (-40°C to 65°C)				-4°F to +140°F, -328°F to +2498°F...+/-0.3%rdg+2°F -20°C to +60°C -200°C to +1370°C...+/-0.3%rdg+1°C ±1.4°F (±0.7°C)
±1°F (0.5°C) 0.1°F (0.05°C) ±100ppm @75°F	±100ppm @75°F	±100ppm @75°F	±1°F (±0.5°C) ±1°F (±0.5°C)	
				0 to 100% RH ±2.5% RH
				0.1% RH
0 – 500 psi ±3 psi 0.15 psi 1/4" MPT Pressure Sensor Connection				
	0-300 Amps ±5% 0.1 Amp AC 0 – 500 Volts AC ±1 V AC 0.1 V AC	0 – 40 ma ±0.05 ma 0.01 ma		
32°F to 130°F (0°C to 54°C) -40°F to 150°F (-40°C to 65°C) 0% to 95% RH, Non-condensing -40°F to 170°F (-40°C to 77°C)	32°F to 130°F (0°C to 54°C) -40°F to 150°F (-40°C to 65°C) 0% to 95% RH, Non-condensing -40°F to 170°F (-40°C to 77°C)	32°F to 140°F (0°C to 60°C) -40°F to 150°F (-40°C to 65°C)		32°F to 120°F (0°C to 50°C) non-condensing 0-90% non-condensing
Single point offset calibration available through software. Pressure is factory calibrated.	Single point offset calibration available through software. Current and Voltage are factory calibrated.	Single point offset calibration available through software.	Single point offset calibration available through software.	Password Protected Calibration
3" x 2.5" x 1.1" (7.6cm x 6.4cm x 2.8cm) 2.5 Oz (71g) 9V Alkaline or Lithium battery (not included)	3" x 2.5" x 1.1" (7.6cm x 6.4cm x 2.8cm) 2.5 Oz (71g) 9V Alkaline or Lithium battery (not included)	3" x 2.5" x 1.1" (7.6cm x 6.4cm x 2.8cm) 2.5 Oz (71g) 9V Alkaline or Lithium battery (not included)	1.75" x 0.87" x 0.87" 3.0 Volt Lithium (CR2032) (included) 3.5 Years Average	7.3" x 2.5" x 1.2" (186 x 64 x 30mm) Approximately 11.25 oz, (320g) 9V battery (included) N/A
19 Months using Alkaline Battery 38 Months using Lithium Battery	20 Months using Alkaline Battery 40 Months using Lithium Battery	20 Months using Alkaline Battery 40 Months using Lithium Battery		



Palm™ to LOGiT Interface Kit*

Store data from multiple LOGiT data loggers to your Palm™ and download it to your PC when it's convenient for you. You can also view the data for instant analysis and program your logger easily.

New!

LOGiT Series



Kit Includes:

- PC & Hotsync Software on CD ROM
- PLINT Interface and cables

Features

- Download data from multiple LOGiT loggers to your Palm™.
- Store approximately 30 logger files per 1MByte of free handheld memory.
- View the LOGiT data on your handheld (text format).
- Check the LOGiT logger status.
- Setup the LOGiT logger for a new logging session.
- End the currently active logging session.
- Import logger data stored in your Palm™ to your PC.
- Export logger data stored on your PC to your Palm™.

Minimum System Requirements:

- Palm™ OS Version 3.3 and above, running on one of the Palm™ units in the Compatible Devices table below, with at least 128KBytes free memory.
- Palm™ Desktop Software Version 3.0.1 and above, running on Windows 95 or above (Can be downloaded from www.palm.com).
- LOGiT PC Interface Software Version 2.00 or above (included in this kit)



Model Supported Handheld Devices (not included)

LPI3	Palm™ III / IIIe / IIIx / IIIxe / IIIc, Palm™ VII / VIIx, IBM Workpad
LPI5	Palm™ V / Vx, IBM Workpad C3
LPIM100	Palm™ m100 / m105
LPIM500	Palm™ m125 / m130, Palm™ m500 / m505 / m515, Palm™ i705, Palm™ TUNGSTEN T2/T3/W/C (Not compatible with TUNGSTEN E, Palm™ Zire 71 (not compatible with the original Palm™ Zire or the Zire 21), IBM Workpad C500/C505

Note: Not compatible with Handspring and Sony CLIE models

For latest compatibility information, check our website at www.supco.com/palm.htm

* This kit does not include a Palm™ PDA.

Data Logger Accessories

Standard Accessories		LT2	LTH	LTC	LTT	LPT	LCV	L420	SL200C	HTHL10
14265	15' Remote Temperature Sensor	*				*				
DLTP6	4" Stainless Steel Temperature Sensor		*		(2)					
TPFDA	K-type Thermocouple with 4' FDA Approved Insulation			*						
12261	Pressure Sensor					*				
12867	300 A Current Probe†						*			
13495	Cable								*	
12782	Battery								*	
Optional Accessories										
LITH9B	Lithium Battery	*	*		*	*	*	*		
USBS	USB to Serial Interface	*	*		*	*	*	*	*	
LLS	LOGiT PC Software & Interface	*	*	*	*	*	*	*		
LPI3	Palm to LOGiT Interface	*	*	*	*	*	*	*		
LPI5	Palm to LOGiT Interface	*	*	*	*	*	*	*		
LPIM100	Palm to LOGiT Interface	*	*	*	*	*	*	*		
LPIM500	Palm to LOGiT Interface	*	*	*	*	*	*	*		
SW25	25' Temperature Probe Extension Wire	*				*				
SW50	50' Temperature Probe Extension Wire	*				*				
SW75	75' Temperature Probe Extension Wire	*				*				
SW100	100' Temperature Probe Extension Wire	*				*				

†Current probe must be factory calibrated with LCV logger,

